

# A GOOD START FOR EVERY CHILD

MORE PRESCHOOLS, FINANCIAL SUPPORT AND PROGRAMMES TO BETTER SUPPORT CHILDREN, FAMILIES AND EDUCATORS.

## MORE PRESCHOOL PLACES

**30,000** more full-day places to be added over the next five years.



**200,000** full-day places for preschoolers by 2023.

## ENHANCED PRESCHOOL AFFORDABILITY

- More subsidies to non-working mothers who are looking for work, or unable to work due to care-giving commitments.



- Provide parents with greater certainty on the subsidy amounts they will receive, by verifying the working status of mothers and household income at longer, fixed-point intervals, instead of annually.



- Streamline subsidy and financial assistance applications into one application form, to make the process faster and more convenient.

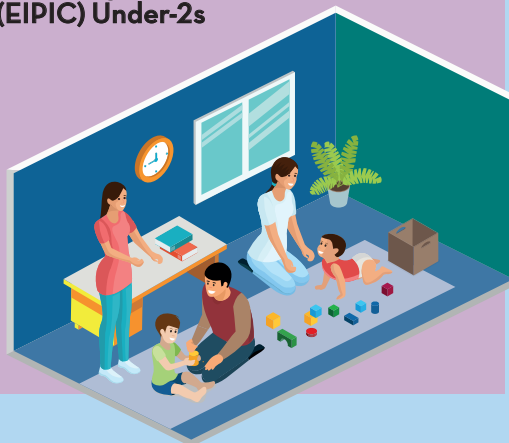


## MORE SUPPORT FOR CHILDREN WITH DEVELOPMENTAL NEEDS

Two new enhanced Early Intervention (EI) programmes will be rolled out in phases by the 21 EI centres from July 2019.

### 1 Early Intervention Programmes for Infants and Children (EIPIC) Under-2s

- Serves children below 2 years old.
- Trains parents on intervention strategies to apply in their child's daily life.



### 2 Development Support Plus (DS-Plus)

- Caters to children who have made progress under EIPIC with mild-moderate developmental needs, and can now proceed to receive intervention in their preschools.
- Deploys EI professionals to co-teach the child in class alongside preschool teachers.



- Early intervention services made more affordable**  
From 1 April 2019, fees for EI services will be reduced by an average of **30% to 70%** for children who are Singapore Citizens.

#### Example A

Four-member family with a combined household income of

**\$4,000**



Current subsidies:	Enhanced subsidies:	Reduced by
<b>\$120</b>	<b>\$10</b>	<b>↓ 92%</b>
per month	per month	

#### Example B

Four-member family with a combined household income of

**\$8,000**



Current subsidies:	Enhanced subsidies:	Reduced by
<b>\$410</b>	<b>\$130</b>	<b>↓ 68%</b>
per month	per month	

#### Example C

Four-member family with a combined household income of

**\$16,000**



Current subsidies:	Enhanced subsidies:	Reduced by
<b>\$770</b>	<b>\$330</b>	<b>↓ 57%</b>
per month	per month	

“For young children with developmental needs, early intervention (EI) is valuable, and helps them achieve their fullest potential.”

**ASSOCIATE PROFESSOR MUHAMMAD FAISHAL IBRAHIM**  
Senior Parliamentary Secretary  
For Social And Family Development

## FOR EDUCATORS

### MORE OPPORTUNITIES FOR TRAINING & CAREER PROGRESSION

- Aspiring early childhood educators and post-secondary students can enrol in **early childhood courses** offered by the National Institute of Early Childhood Development (NIEC) and other private training agencies.
- Mid-career entrants and existing educators who want to upgrade themselves can sign up for the **Professional Conversion Programme** and the **Place-and-Train Scheme**.



### HIGHER PRODUCTIVITY & BETTER WORKPLACE ENVIRONMENT

- Centralised services and technology solutions** will help free up educators' time from administrative work, such as attendance-taking and child documentation.



- A **new online IT platform called CMS** will simplify administrative processes for preschools.



- Occupational Health and Safety Assessments** will be conducted by ECDA and Health Promotion Board (HPB) to help preschools be more conducive workplaces.

