

Designing Play and Learning Environments

Supported by National Arts Council, Singapore



Rosemarie Somaiah

www.asianstorytellingnetwork.com

Introducing the Trainers

FACILITATOR



Rosemarie
Somaiah

- 1994: Teaching functional English to women with The Society for Reading and Literacy (SRL) WISH programme
- 1996-2006: Drama educator for all levels in local schools and institutions
- 2000-2006: Professional storyteller with Singapore History Museum
- 2003-2015: Chair of SRL's The Storytellers' Circle
- 2006-2015: Founder Member of Storytelling Association (Singapore)
- 2005-2015: Storyteller at Preschool
- 2006- 2015: Partner with Asian Storytelling Network (ASN), Singapore's first professional storytelling company

ASSISTANT



Vinod
Somaiah

- Partner with ASN since 2008. Administrator and Project Manager

asian storytelling network



asian storytelling network



asian storytelling network



asian storytelling network



asian storytelling network



asian storytelling network



Outline

We will:

- Consider how children play
- Stimulate and role-model meaningful play
- Design environments for enriching child *and* teacher-led play and learning

How do children play?
Play = Fun

asian storytelling network



Role-modelling play for children

You must have fun!

asian storytelling network

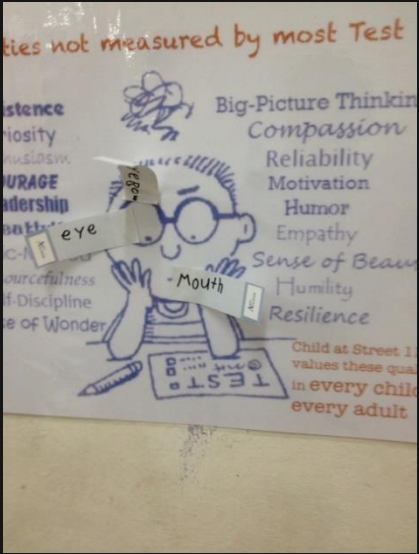


asian storytelling network



Creating meaningful activities around child and teacher-led play

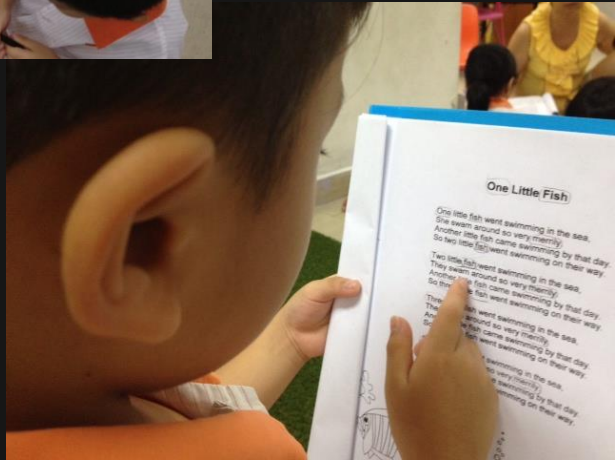
asian storytelling network



asian storytelling network



asian storytelling network



asian storytelling network





Any questions?

A Story

Let's Play!

(Whole group games)



Reflections

Let's Play (Small group games)

Rules of the Game

- In groups
- Each group chooses a leader who facilitates the game
- Each participant chooses an object (a 'toy') from one of the stations
- Carry this back to your group
- One person in the group begins to play with his/her toy
- One by one, all the others join in.
- Stop when you are not enjoying it any more.

Playing the Game

To help you to play, consider:

- **Who** or **what** is the toy in your hand? *(Character)*
- **Where** is he/she/it? *(Setting)*
- What does he/she/it need or want to do? *(Task)*
- **Why**? *(Meaning)*
- What is blocking him/her/it? *(Problem / Obstacle)*
- How does he/she/it deal with this? *(Possible resolution)*



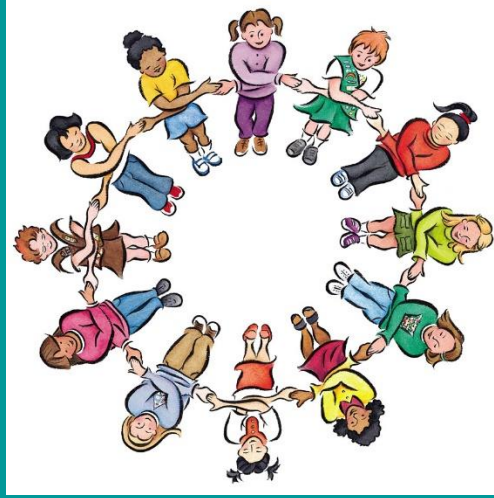
Group Reflections

Reflections

In groups, based on the your experience of the activity, discuss:

- What is the difference between Work & Play?
- 'Playschool' or 'Preschool?'
- How do *you* find the balance?
- What are the challenges?
- What is the potential?

Group Sharing





Questions?

Thank You
and Goodbye!