

Is that

Rainbowsaurus

So Different from Us?



Illustrated by

Emily Lim

Jade Fang

Is that

Rainbowsaurus

So Different from Us?

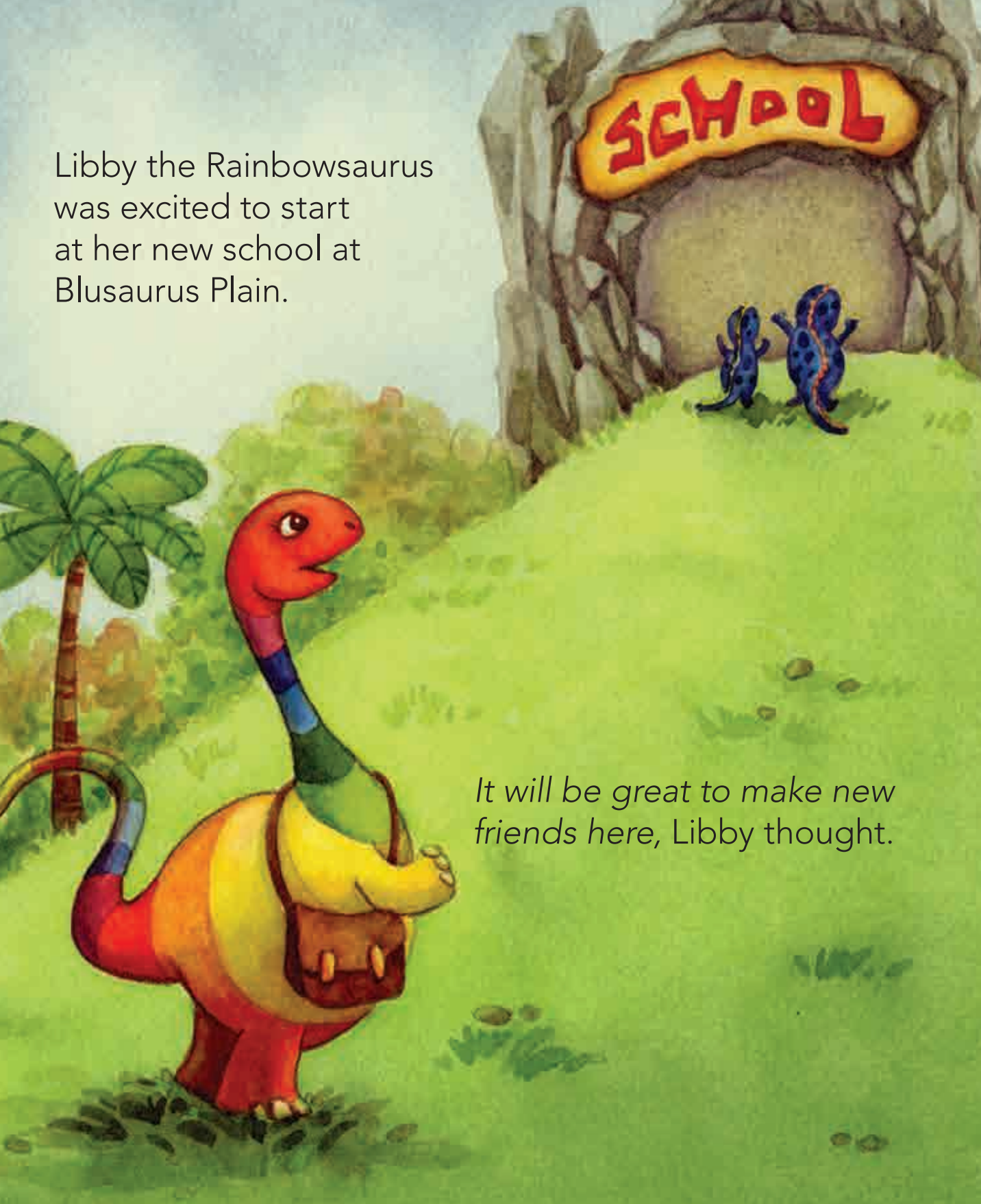
Emily Lim

Illustrated by

Jade Fang



Libby the Rainbowsaurus was excited to start at her new school at Blusaurus Plain.



It will be great to make new friends here, Libby thought.

But when Libby joined her class on the first day, the Blusauruses only whispered amongst themselves.

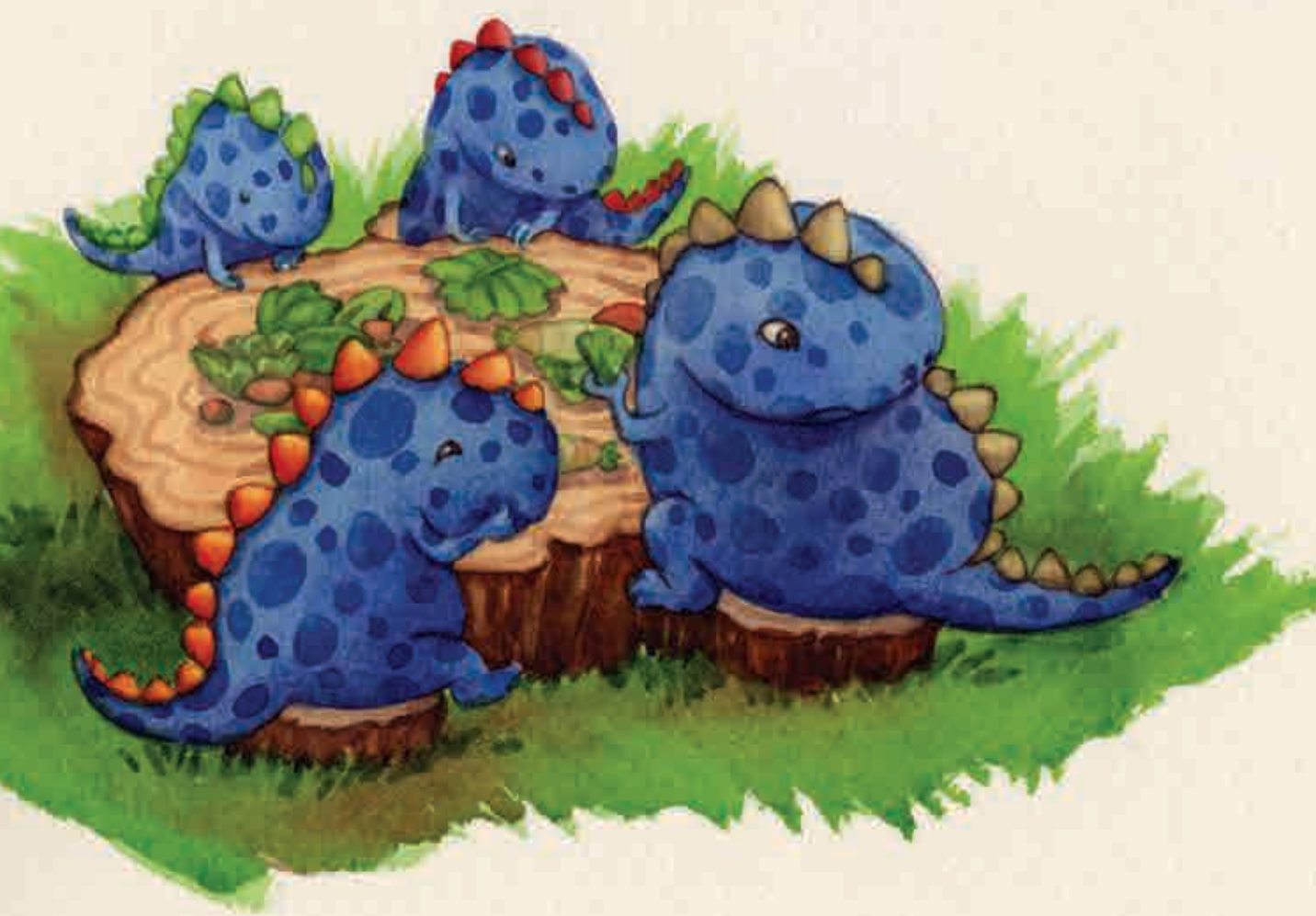


“Why isn’t she blue?” asked Kale.

“She looks like a rainbow!” said Pepper.

“I wonder what type of egg she came from,” said Saga.

“Is that Rainbowsaurus so different from us?”
Spuddy wondered.



During lunch break, the Blusauruses ate their usual plant food.

But Libby took out a strange thorny fruit from her lunchbox.

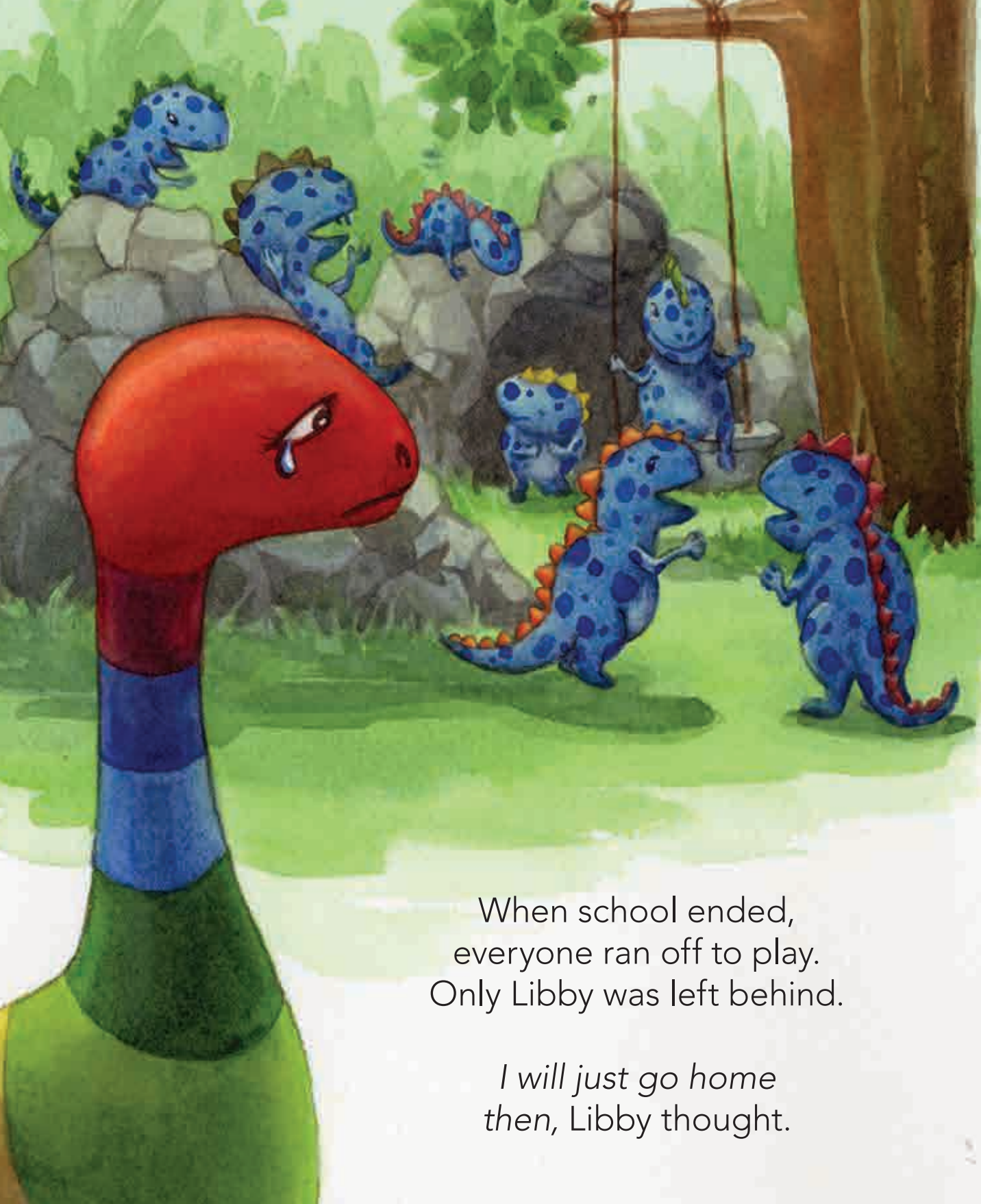


“Eew... What’s that?” asked Kale,
covering her nose.

“It smells like a rotten egg!” exclaimed
Pepper.

The Blusauruses stayed away from Libby.





When school ended,
everyone ran off to play.
Only Libby was left behind.

*I will just go home
then, Libby thought.*



As Libby walked home, she wondered aloud, "Why doesn't anyone talk to me?"

Libby did not realise that a few Blusauruses were nearby.

"It's the Rainbowsaurus," whispered Kale.

"Her eyes are red," said Pepper.
"And she seems lonely," said Saga.

"We've been talking *about* her all day," said Spuddy. "But none of us has talked to her."





The Blusauruses looked at one another with red faces.

“Let’s ask her to play with us,”
said Spuddy.





Together, the Blusauruses walked up to Libby. "Hello! We are going to Fossil Field to play ball. Do you want to join us?"

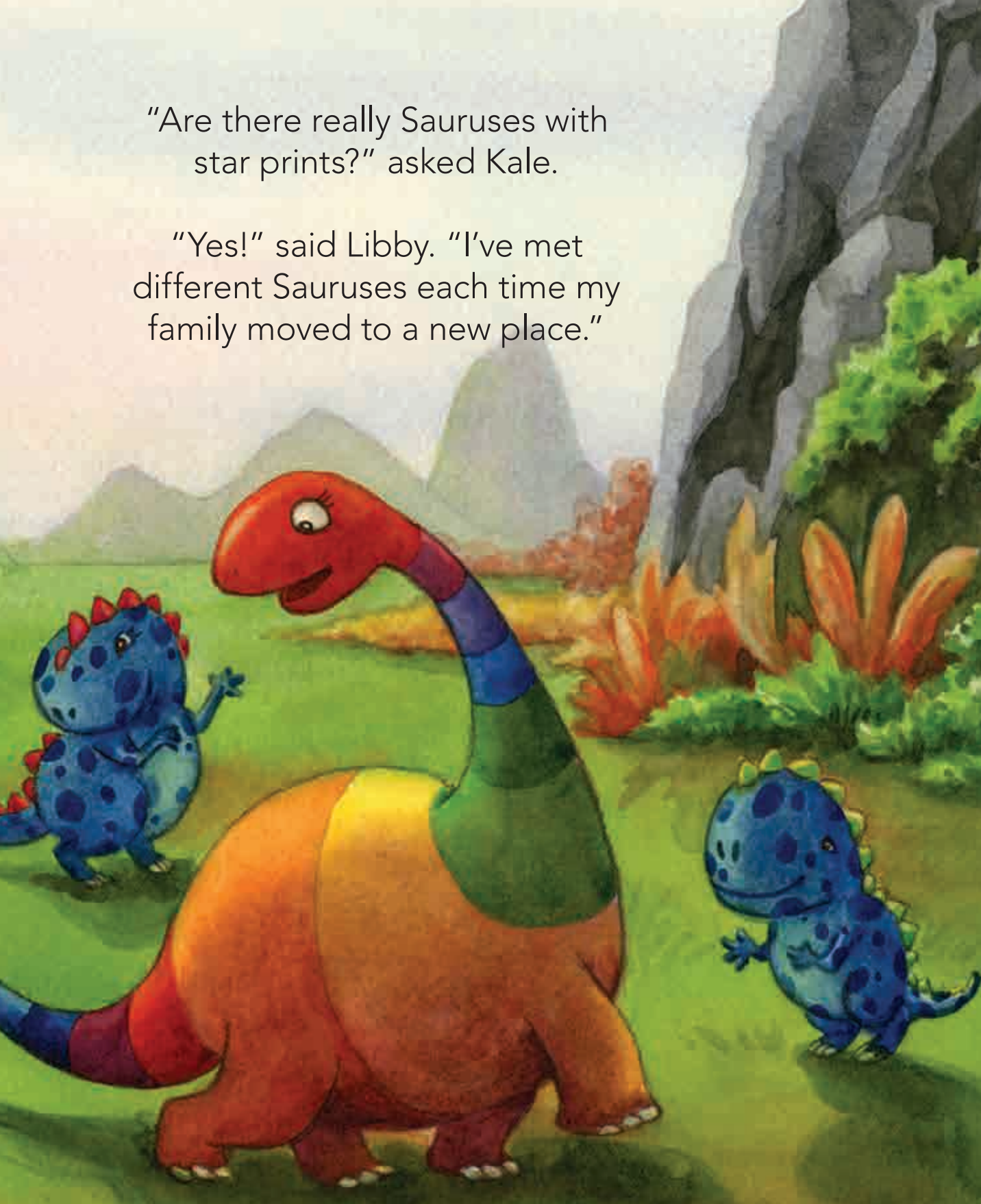
Libby's face brightened up.
"I'd love to! I always played
ball with the Starrysauruses!"





"Are there really Sauruses with star prints?" asked Kale.

"Yes!" said Libby. "I've met different Sauruses each time my family moved to a new place."







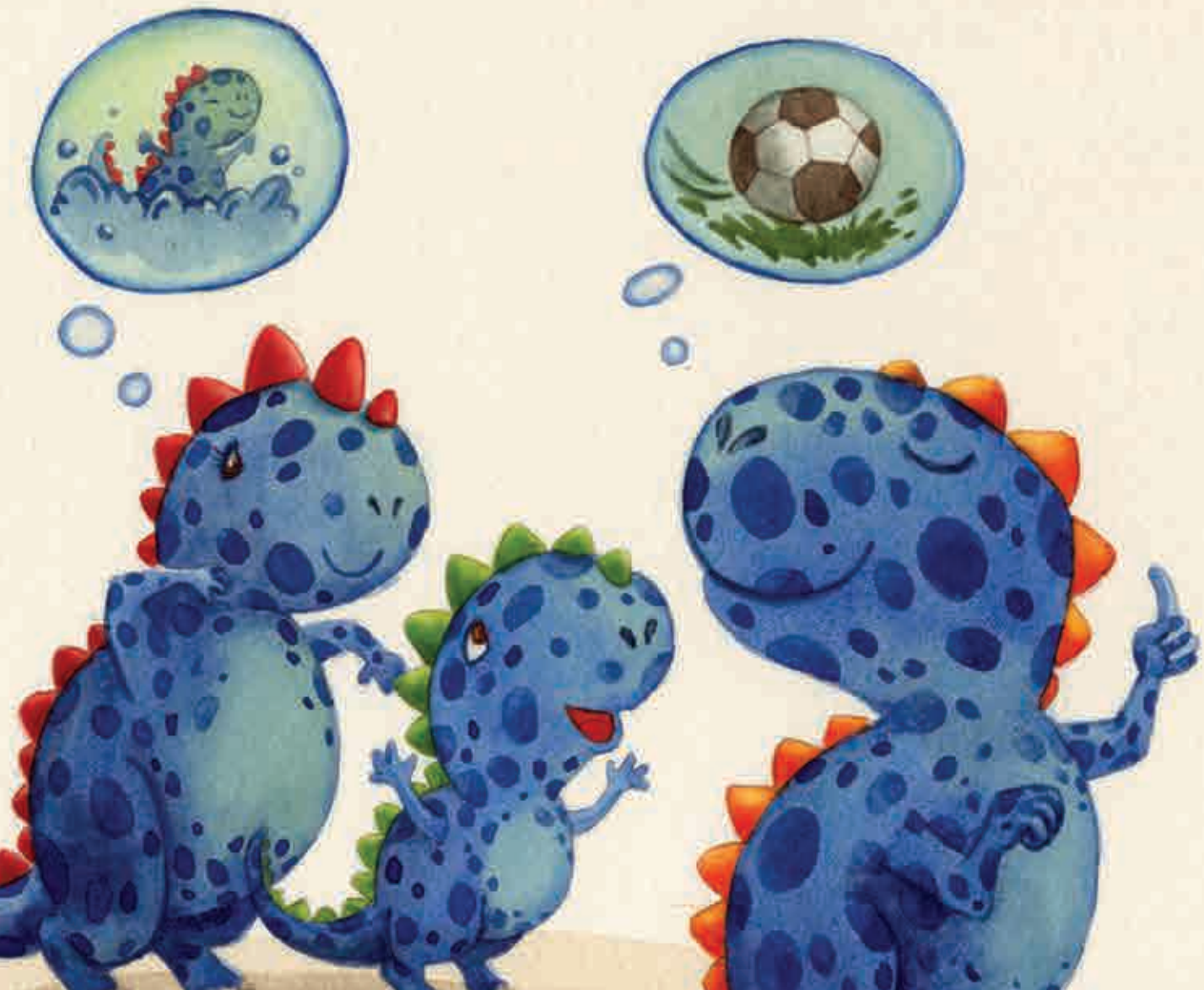
“Bok the Starrysaurus taught me how to play football. Choy the Stripeysaurus loves to swim,” Libby said excitedly. “And Tembusu the Singasaurus loves her food.”



“Well, we love swimming!” exclaimed Pepper.

“And we love football,” added Kale.

“And I love food!” said Saga.



“Looks like we are not so different after all,”
said Spuddy.

“By the way, what was that thorny fruit
you were eating?” everyone asked.





"That's durian, the favourite food of the Singasaurus," said Libby. "I was afraid to go near it at first. But it tastes better than it smells. Would you like to try some?"

"I would," said Spuddy. "Let's do that after our ball game!"

"Okay! Let's race to Fossil Field," shouted Kale.

"And the last one there is the first to try the durian!" cried everyone (including Libby).





Children must not suffer discrimination irrespective of the child's or his or her parent's or legal guardian's race, colour, sex, language, religion, political or other opinion, national, ethnic or social origin, property, disability, birth or other status.

– Article 2 of the United Nations Convention on the Rights of the Child

Libby, depicted by a rainbow-coloured Saurus, represents any child who may appear different because he or she is of another race, colour, culture and background. The reactions of the different Sauruses reflect typical reactions to anything new – from non-acceptance to curiosity to avoidance. The Sauruses however come to realise that they all share the same needs to have friends, find acceptance and fit in.





About Ministry of Social and Family Development (MSF)

The Ministry of Social and Family Development (MSF) aims to bring a sharper focus on enhancing social safety nets for the needy, improving the delivery of social services, and further strengthening families. At MSF, we are professionals with passion for people. Through our policies, community infrastructure, programmes and services, we hope to nurture resilient individuals and families, and play a part in helping our citizens achieve their hopes and aspirations for themselves and their families.

Emily Lim is an award-winning author of numerous children's books. She is the first outside North America to win three medals for children's books at the IPPY Awards, the world's largest book awards. She is also the first in Southeast Asia to win the Moonbeam Children's Book Award.

Jade Fang is one of Singapore's up and coming new illustrators. She has illustrated several children's books for various publishers since completing her Master of Fine Arts degree in Illustration from Academy of Art University, San Francisco.

Copyright © 2013 Ministry of Social and Family Development, Singapore

Published by Ministry of Social and Family Development, Singapore

Ministry of Social and Family Development
MSF Building 512 Thomson Road Singapore 298136
Tel: 6355 5000 Fax: 6353 6695
Email: msf_email@msf.gov.sg
www.msf.gov.sg

Produced by Write Editions®

Write Editions® is a registered trademark and an imprint of
JMatrix Consulting Private Limited, Singapore
A Publishing & Communications Co.
14 Robinson Road #13-00 Far East Finance Building Singapore 048545
Email: publisher@writeeditions.com
writeeditions.com | jmatrix.co

Story concept and art direction by Emily Lim

Illustrations by Jade Fang

All rights reserved. No part of this publication may be reproduced, stored in retrieval systems, or transmitted in any form or by any means, electronic, mechanical, photocopying, recording, scanning, or otherwise without the prior written permission of the Publisher. Requests to the Publisher should be addressed to msf_email@msf.gov.sg.

Limit of Liability/Disclaimer of Warranty: While the Publisher and author have used their best efforts in preparing this book, they make no representations or warranties with respect to the accuracy and/or completeness of the contents of this book and specifically disclaim any implied warranties or fitness for a particular purpose. The Publisher and author shall not be liable for any loss of profit or any other personal or commercial damages, including but not limited to special, incidental, consequential, or other damages.

Printed in Singapore

ISBN: 978-981-07-5375-7 (paperback)
ISBN: 978-981-07-5376-4 (e-book)

National Library Board, Singapore Cataloguing-in-Publication Data

Lim, Emily, 1971-

Is that Rainbowsaurus so different from us? / Emily Lim ; illustrated by Jade Fang. – Singapore : Ministry of Social and Family Development, c2013.

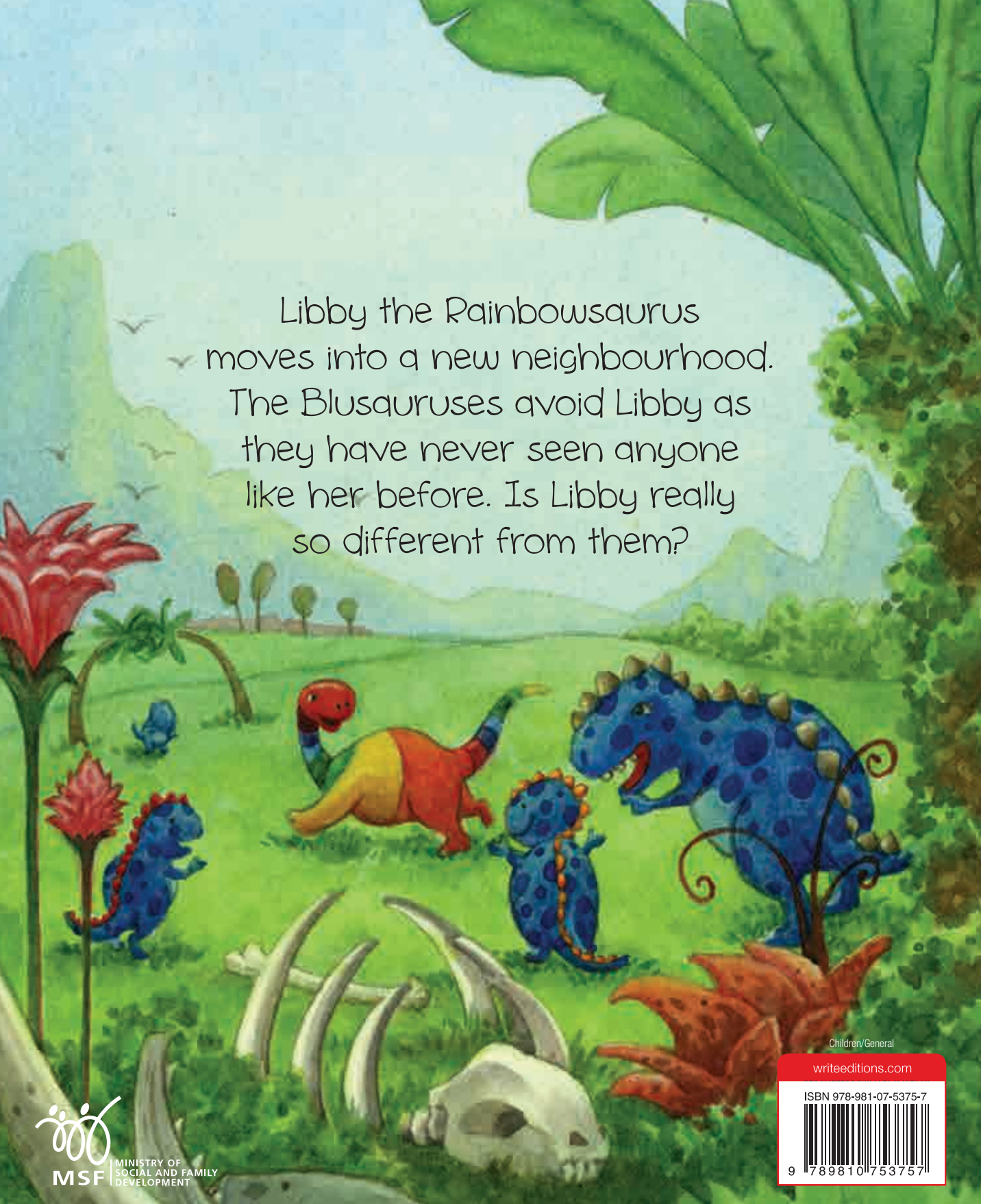
p. cm.

ISBN : 978-981-07-5375-7 (pbk.)

1. Civil rights – Juvenile fiction. 2. Discrimination – Juvenile fiction.
3. Friendship – Juvenile fiction. 4. Dinosaurs – Juvenile fiction. I. Fang, Jade. II. Singapore. Ministry of Social and Family Development. III. Title.

PZ7
428.6 -- dc23

OCN827774464



Libby the Rainbowsaurus
moves into a new neighbourhood.
The Blusauruses avoid Libby as
they have never seen anyone
like her before. Is Libby really
so different from them?

Children/General

writeeditions.com

ISBN 978-981-07-5375-7



9 789810 753757



MINISTRY OF
SOCIAL AND FAMILY
DEVELOPMENT