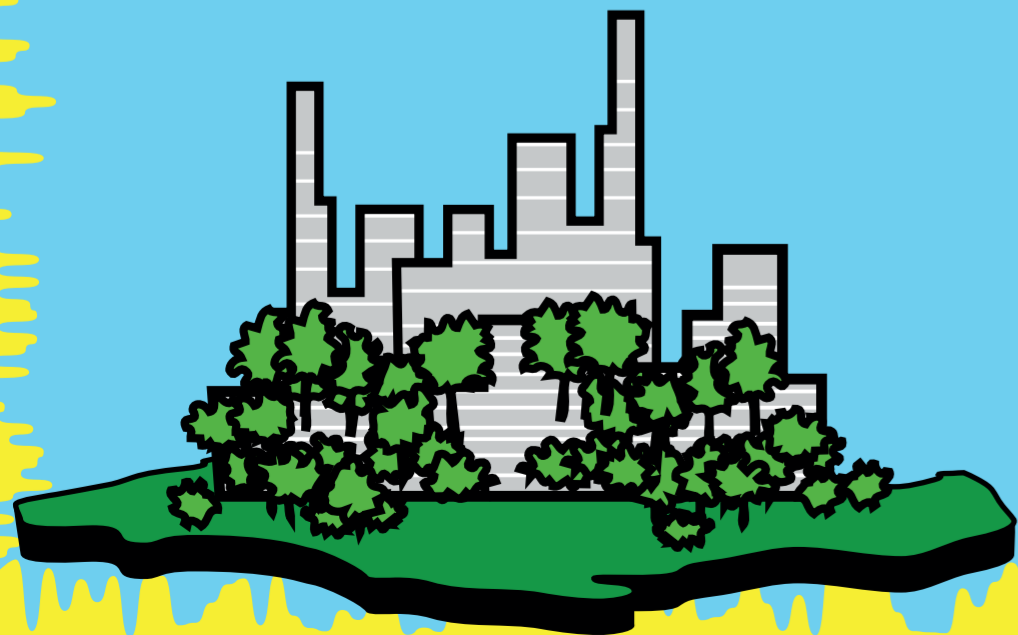


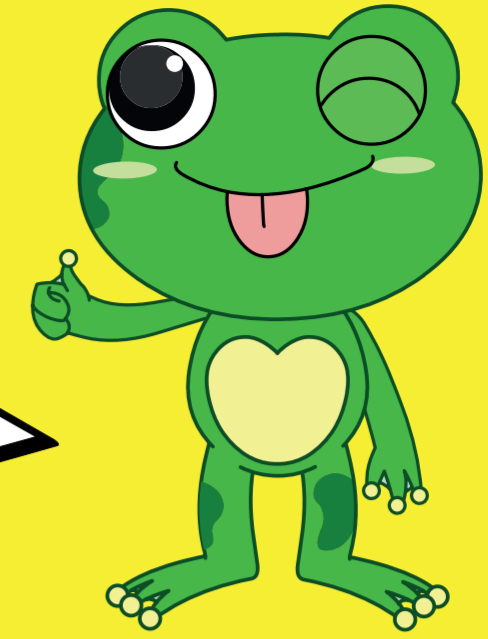


**REDUCE,
REUSE,
RECYCLE**
**CARE FOR OUR
ENVIRONMENT**

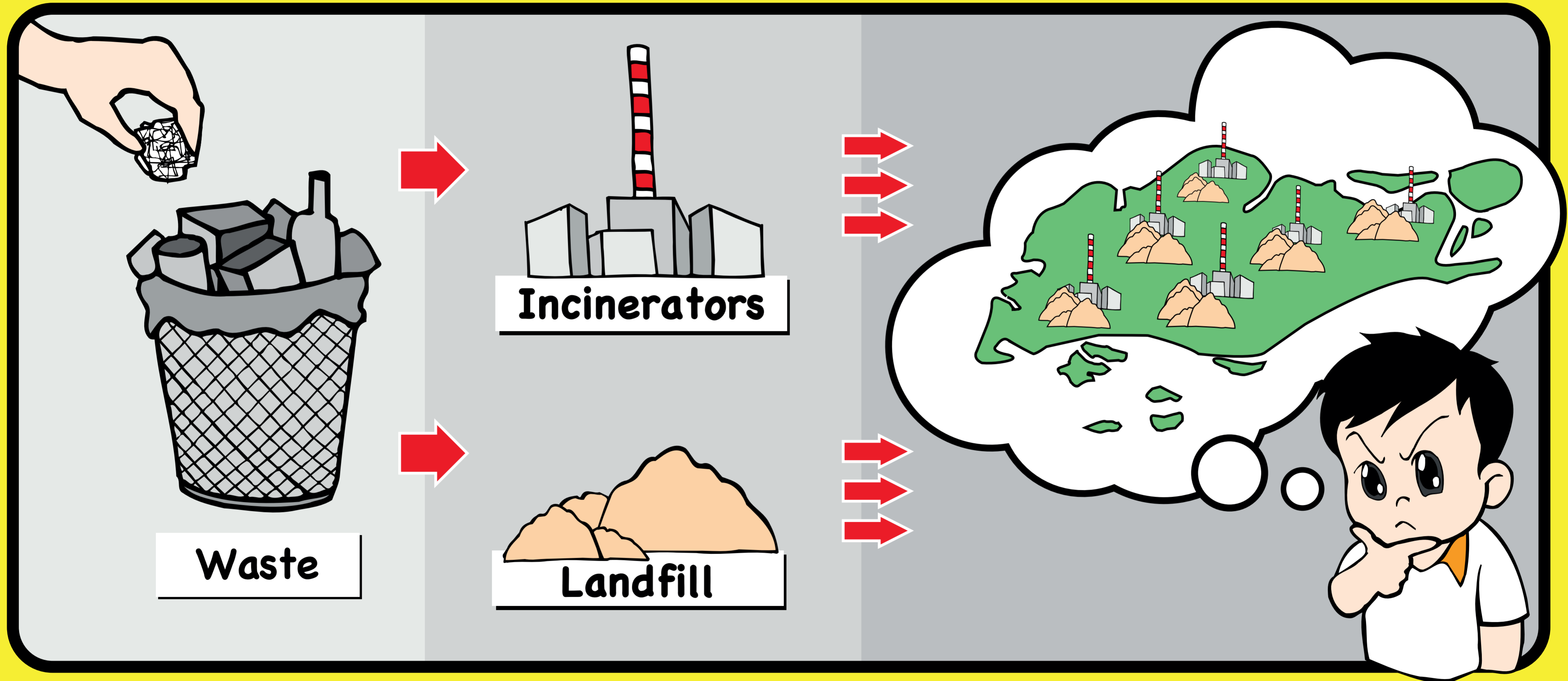
PICTOCARDS



WASTE IS SOMETHING YOU THROW AWAY



1



More waste → no space! What should we do?

Reduce

Reuse

Recycle



REDUCE WASTE AT HOME

2

What can you do?





REDUCE WASTE AT SCHOOL

3

What can you do?

Use my own box to bring snacks to school



Bring my own water bottle



Use both sides of the paper





REUSE WASTE AT HOME

4

What can you do?

Reuse a plastic bag to line rubbish bin



Reuse unwanted glass/plastic containers as vase or pencil holders



Reuse unwanted clothes (eg. shirt) for cleaning



Reuse old books by giving them away





REUSE WASTE AT SCHOOL

5

What can you do?

Make toys out of empty tissue boxes



Make storage boxes out of old cartons



Make handicraft out of scrap paper





WHY RECYCLE?

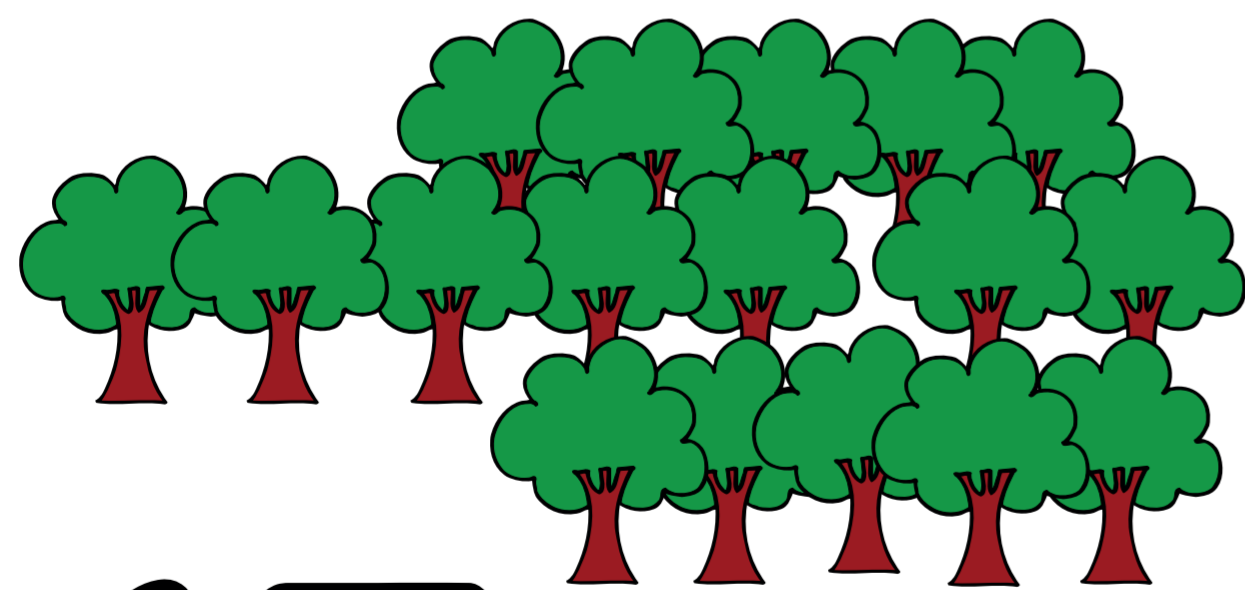
6

Do you know?



Recycling
1 tonne
of paper

saves



17 trees

Recycling
aluminium cans

saves

95%

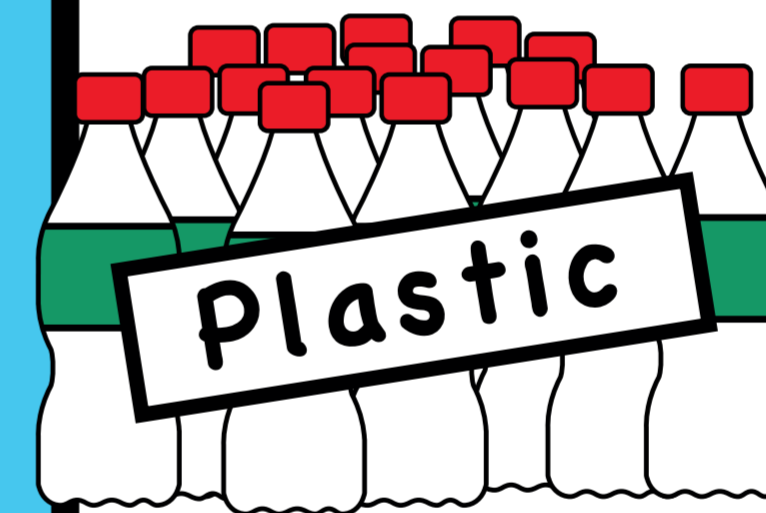
of the
energy

needed
to make
new ones



Recycling

17 x 500ml



plastic
bottles

can
make

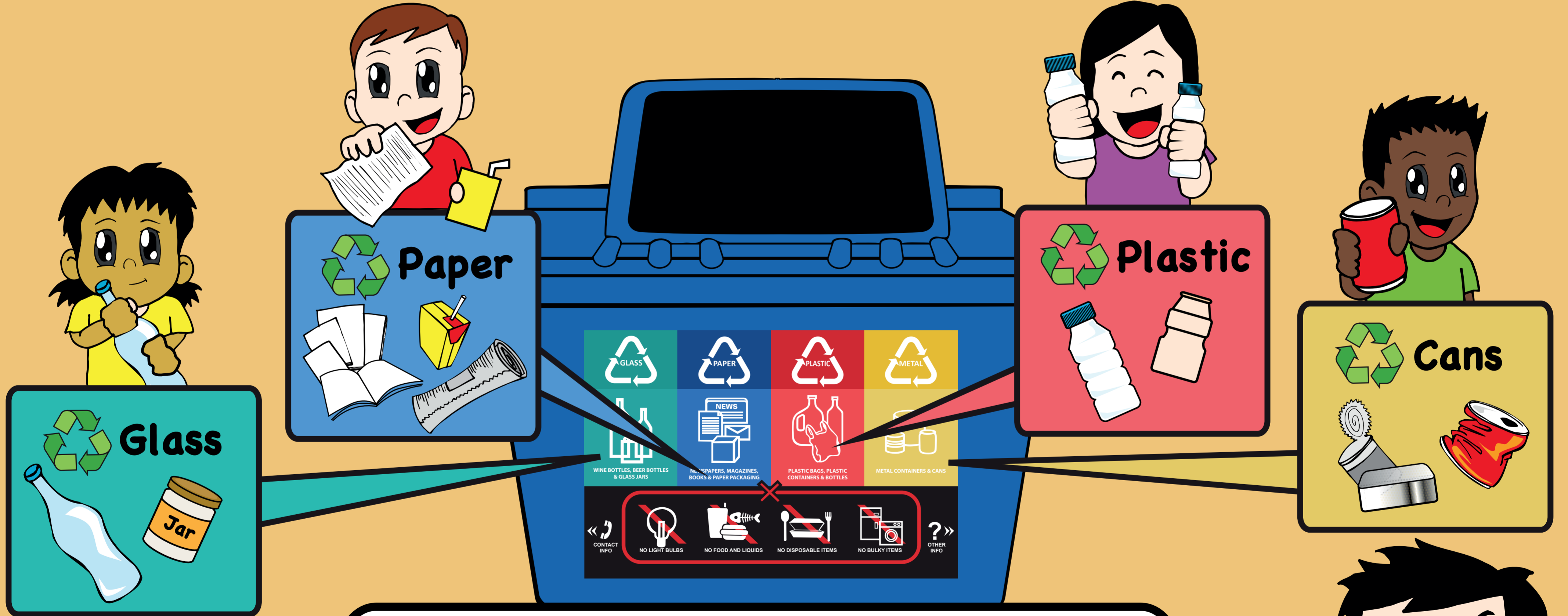
1 extra large
T-Shirt



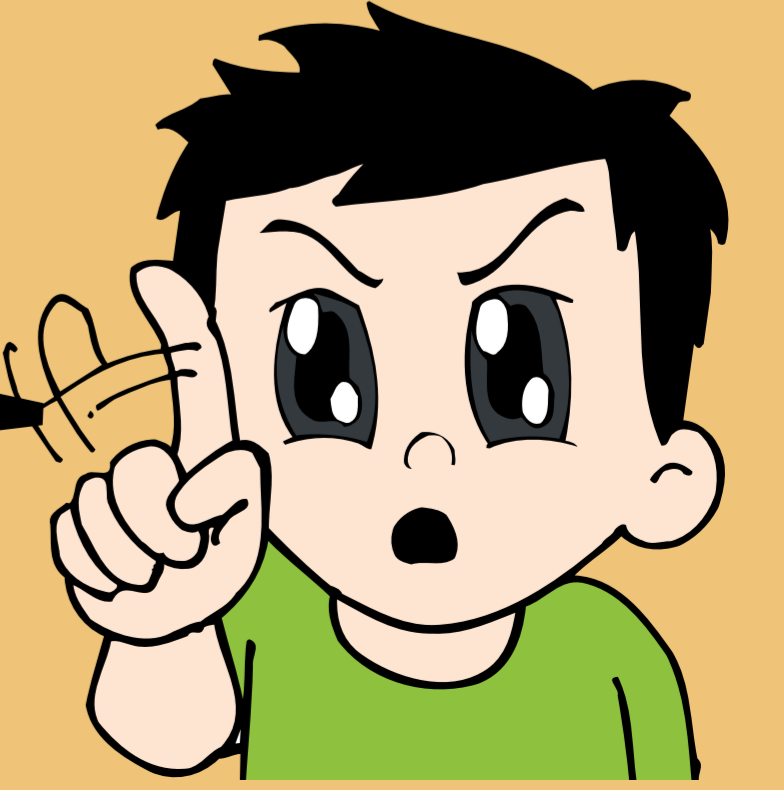


RECYCLE WASTE

Do you know what can be thrown into the recycling bin?



X tissue paper, styrofoam containers
porcelain, ceramic and anything
dirtied by food or drinks

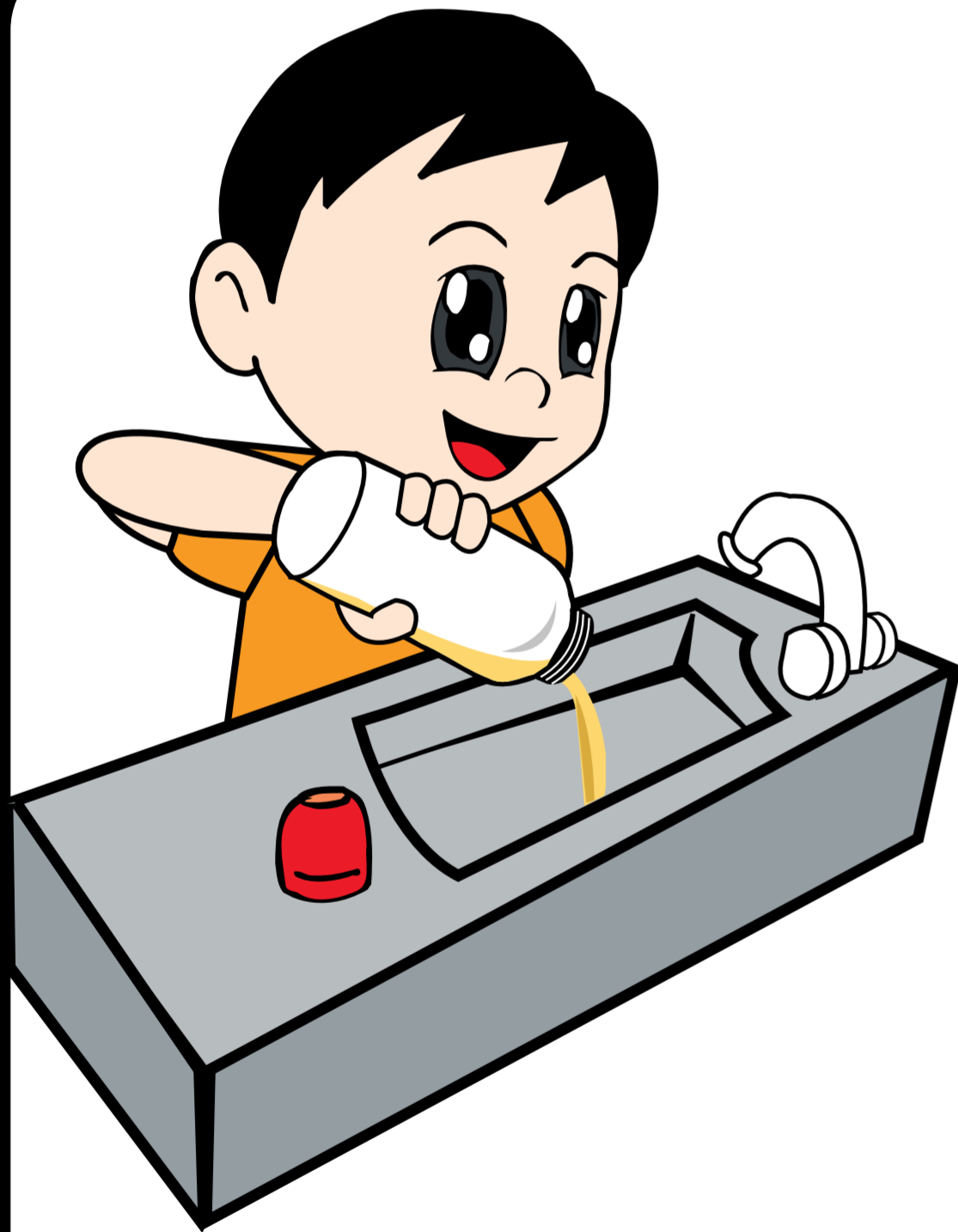




RECYCLE WASTE AT HOME

8

What can you do?



Empty and rinse
if needed



Put recyclables
into a used
plastic bag



Deposit into
recycling bin

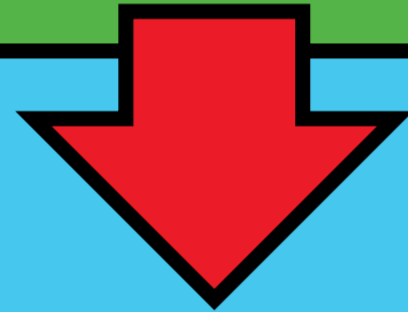


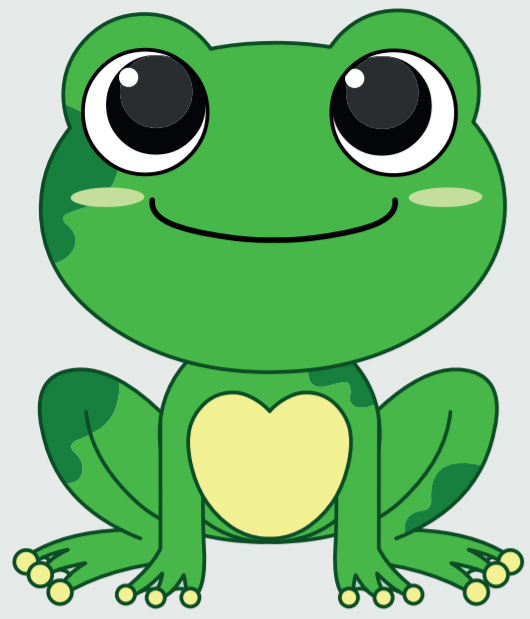
RECYCLE WASTE AT SCHOOL

9

What can you do?

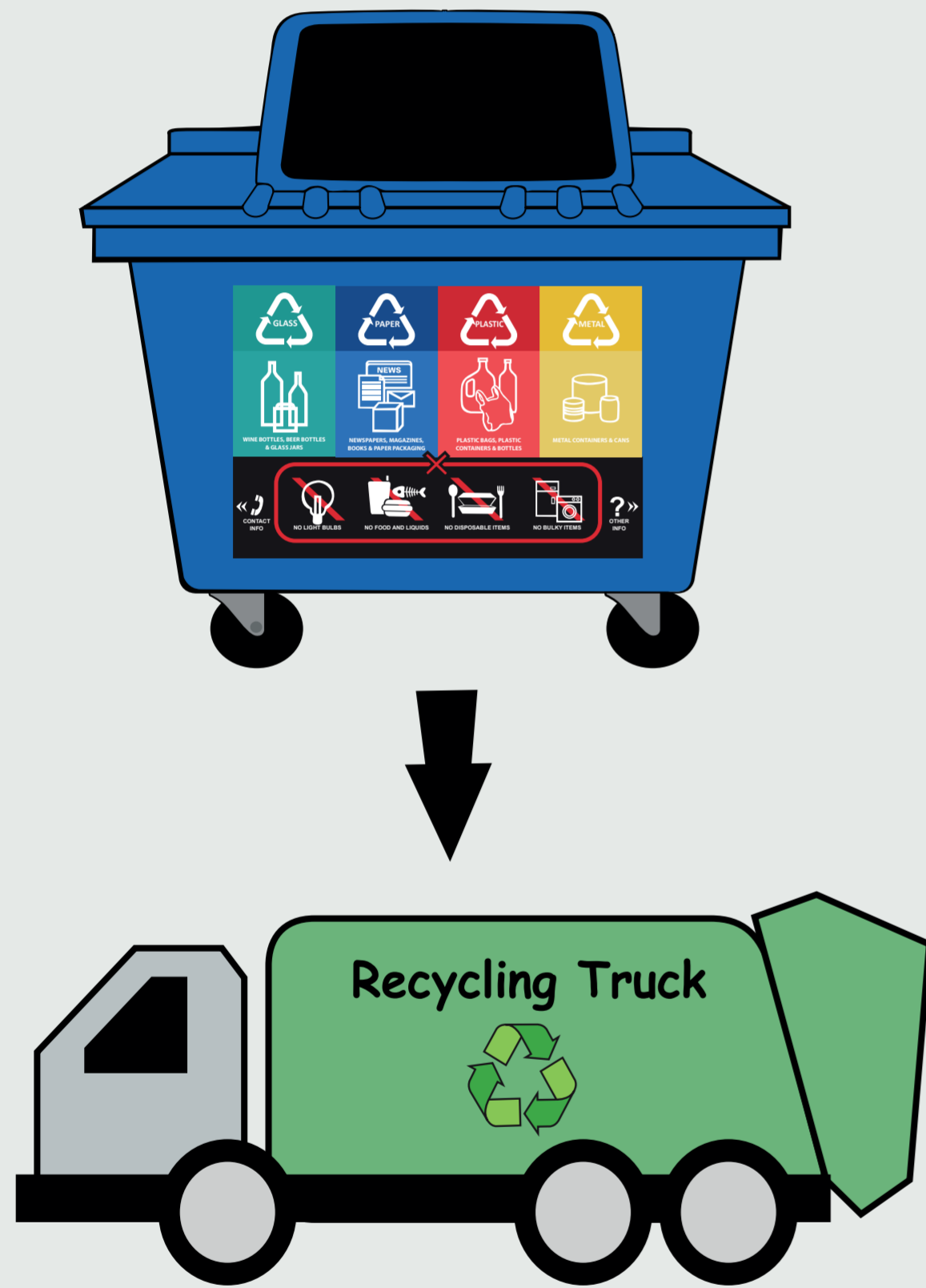
Recycling Point





DO YOU KNOW WHAT HAPPENS AFTER COLLECTION?

10

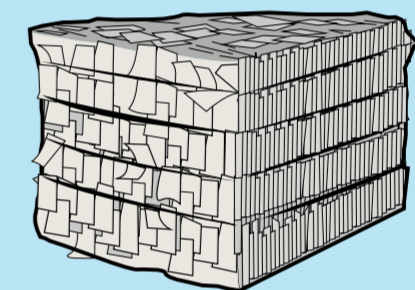


Collection by a recycling truck which goes to a Material Recovery Facility

Sorting mixed waste into paper, plastic, metal and glass at a Material Recovery Facility



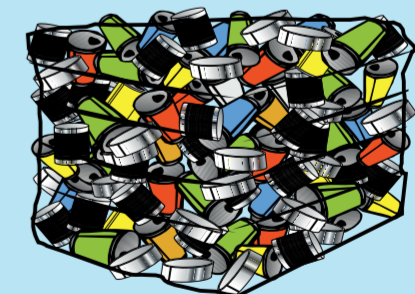
Each type of waste is packed into a bundle and sent to a recycling plant



Baled Paper



Baled Plastic



Baled Can

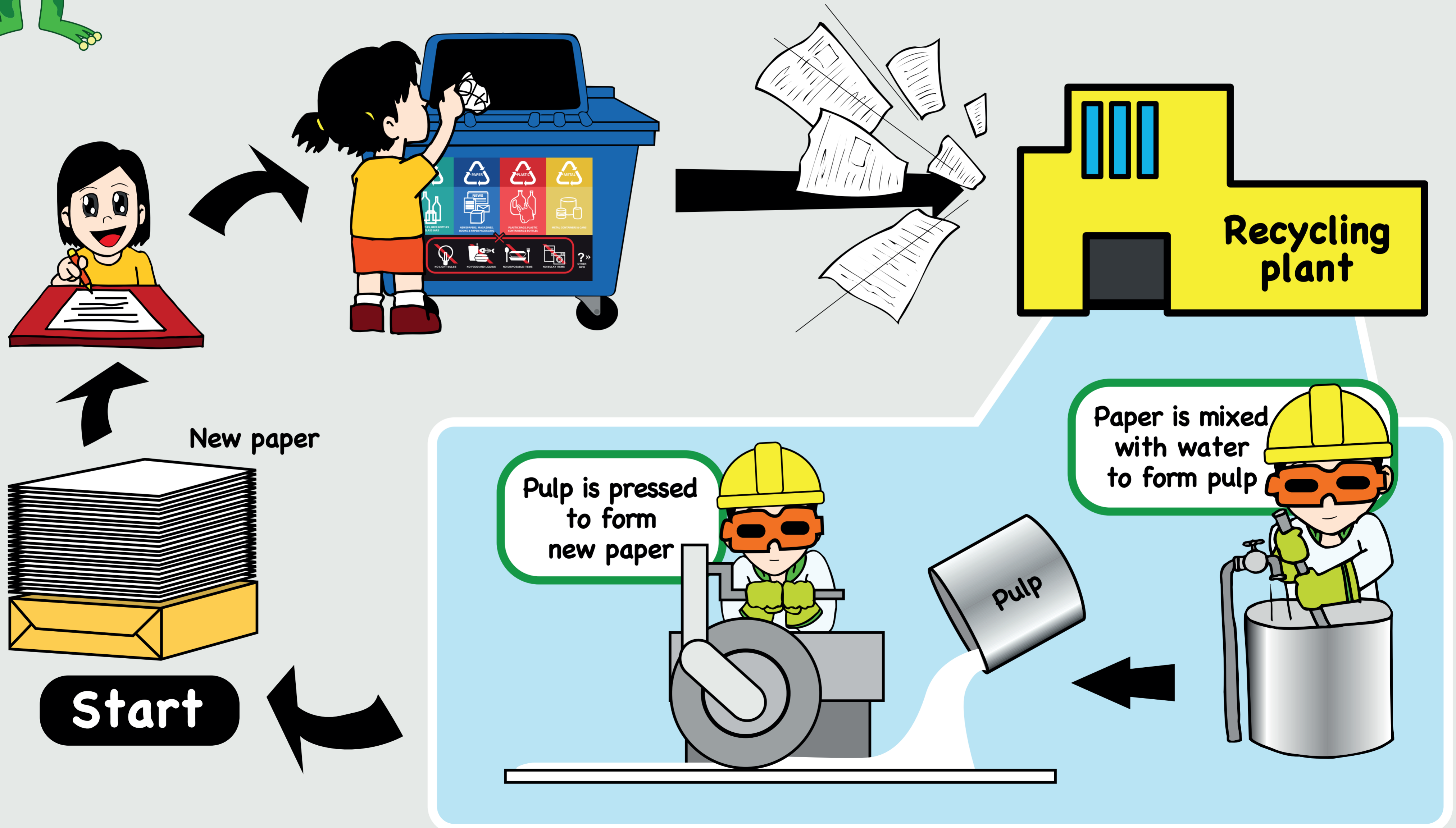


Baled Glass



DO YOU KNOW HOW PAPER IS RECYCLED?

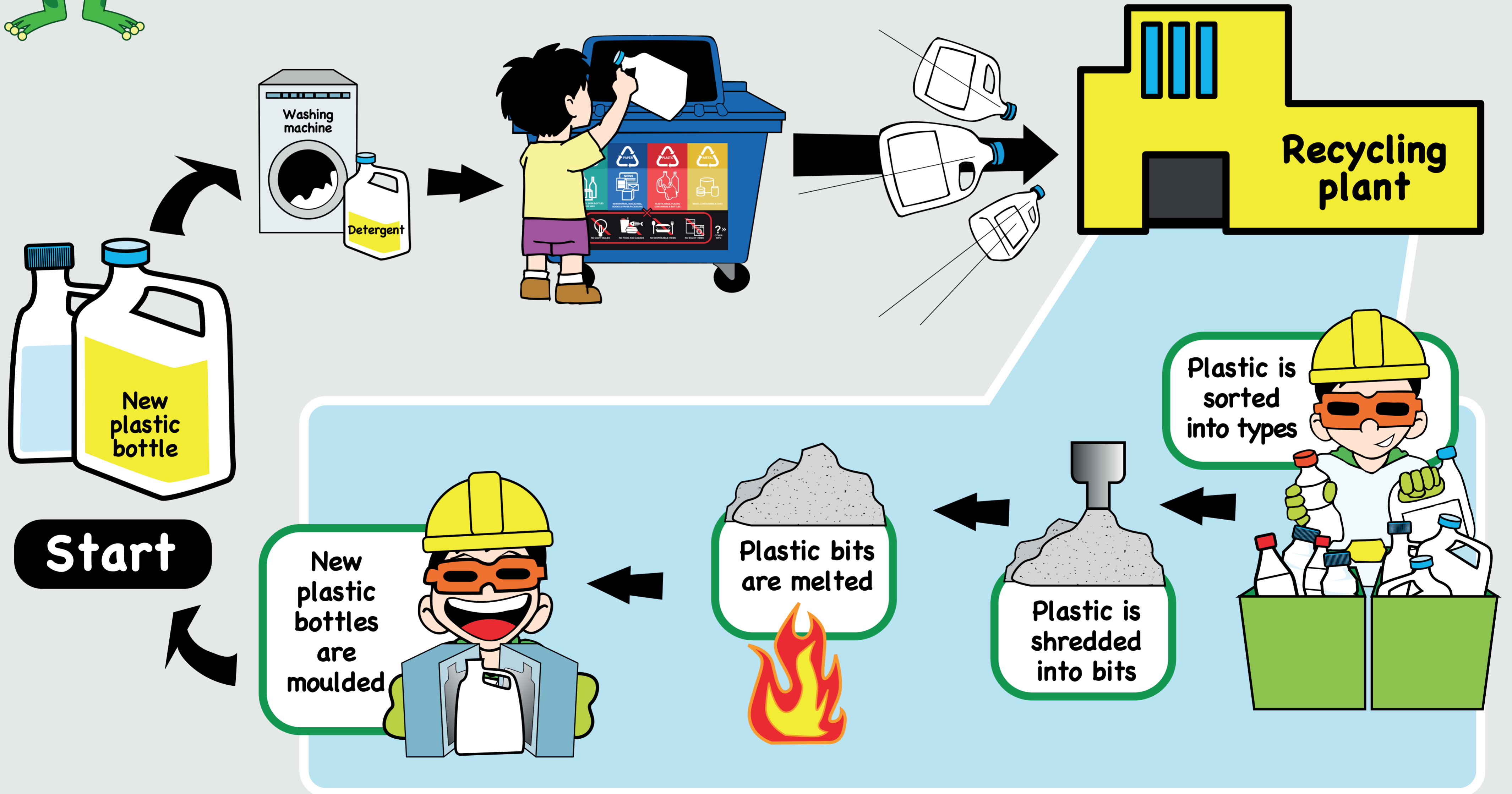
11





DO YOU KNOW HOW PLASTIC IS RECYCLED?

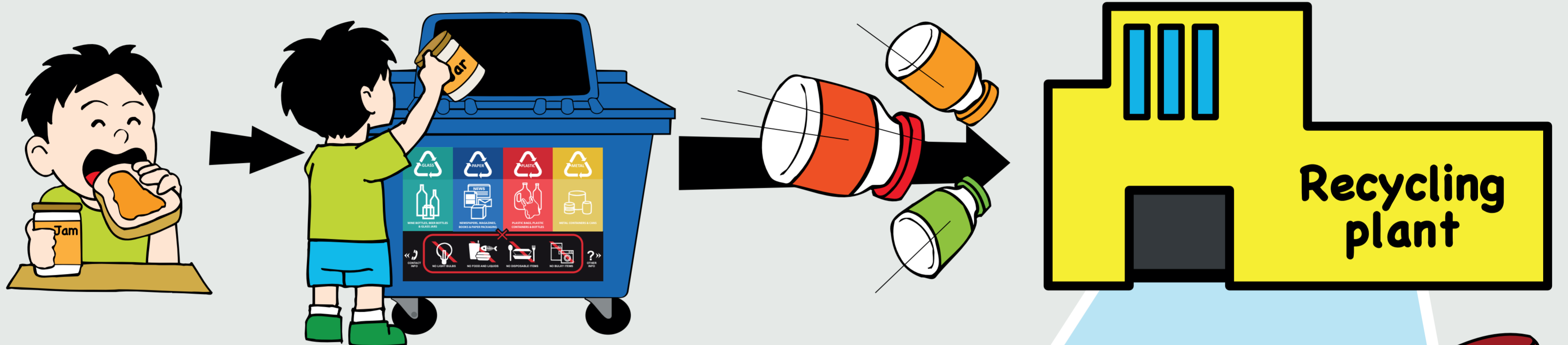
12



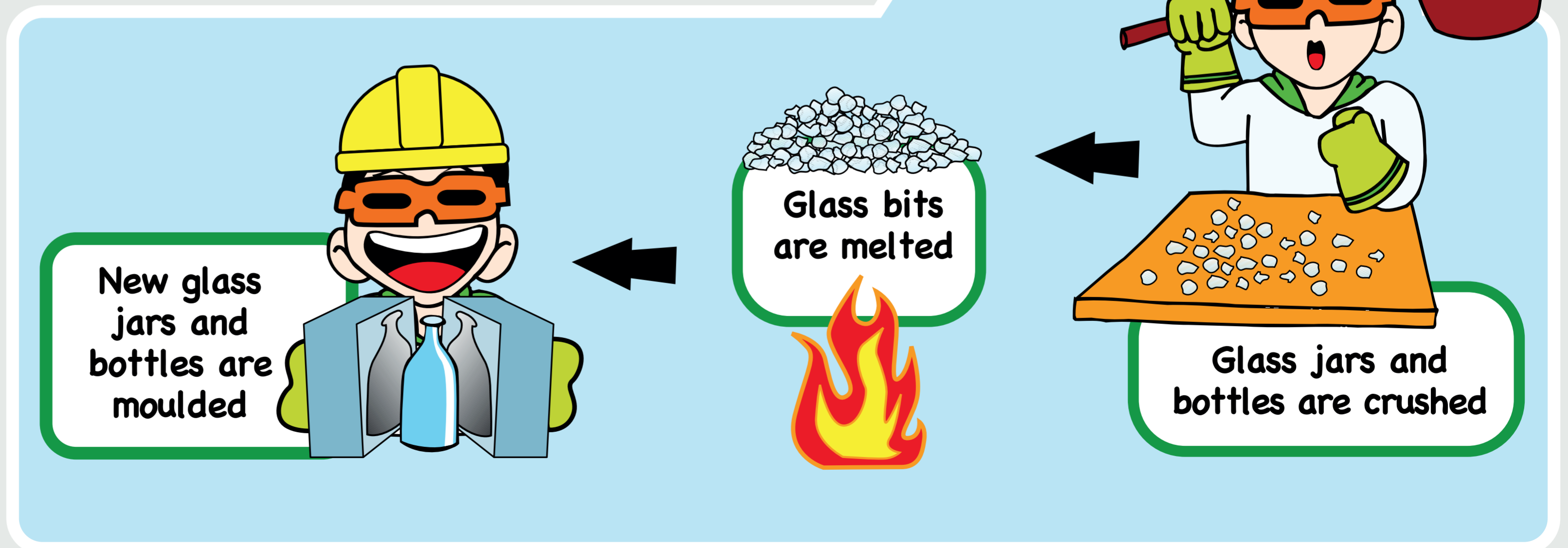


DO YOU KNOW HOW GLASS IS RECYCLED?

13

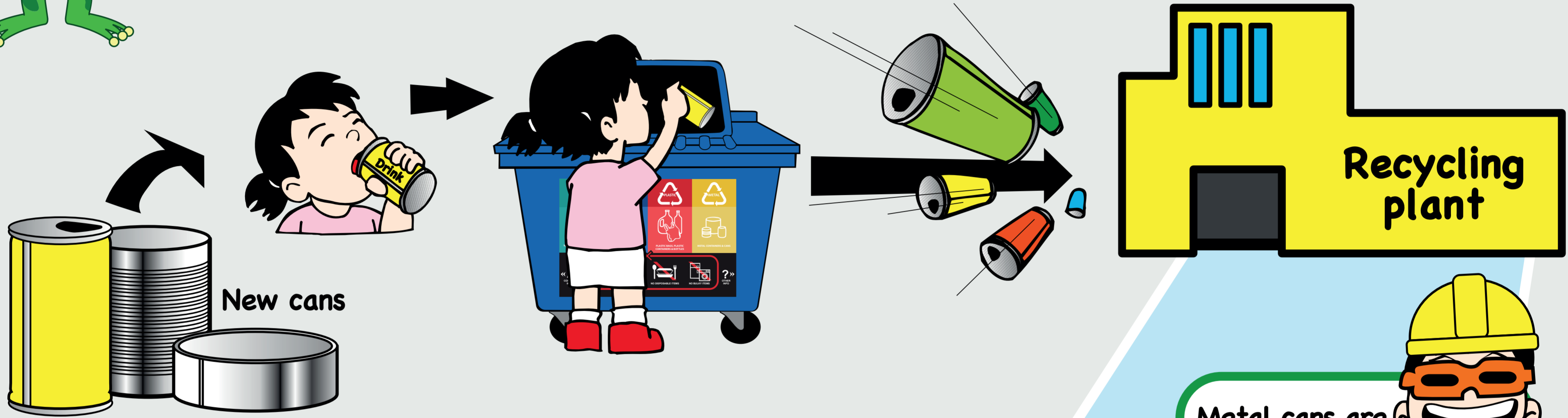


Start

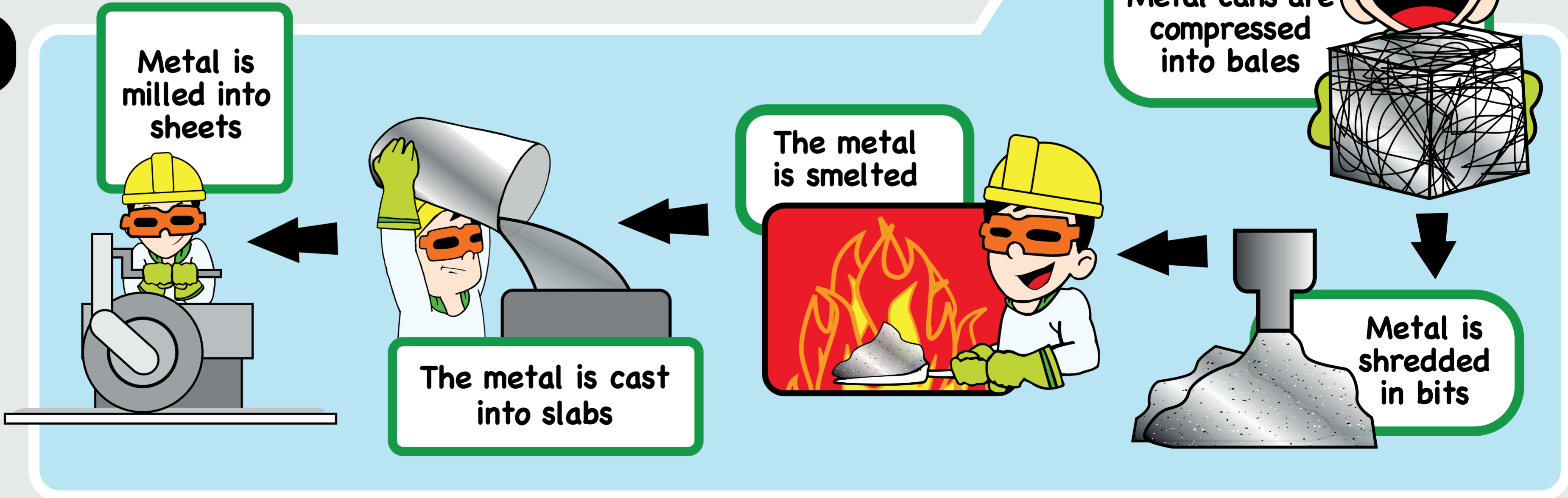




DO YOU KNOW HOW CANS ARE RECYCLED?



Start



An initiative by :



Copyright © 2014 National Environment Agency

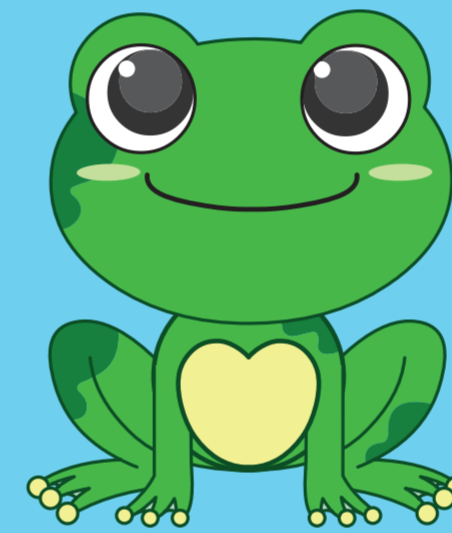
All rights reserved. No part of this publication may be reproduced, stored in a retrieval system, or transmitted in any or by any means, electronic, mechanical, photocopying, recording or otherwise, without prior permission in writing from the Waste and Resource Management Department, National Environment Agency.

ISBN: 978-980-05-9479-4

First revised edition.

Printed on recycled paper.

REDUCE, REUSE, RECYCLE



CARE FOR OUR ENVIRONMENT

